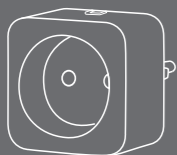


# ADUOSMART ERIA

## USER MANUAL SMART PLUG



### LED FUNCTION TABLE

Connection mode	The LED indicator will flash once per second for 60 seconds.
Connection successfully	Once the connection has established the LED indicator will stop flashing.
Plug Reset	The LED will show a burst of fast flashes.

### Connect with the ERIA hub

1A. Download the Adurosmart App from the Apple App Store or from Google Play or go to <http://adurosmart.com/adurosmart-app/>

Android



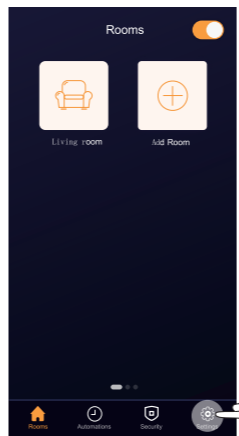
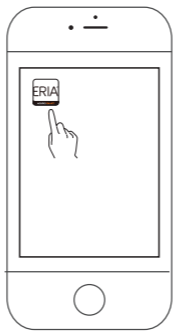
IOS



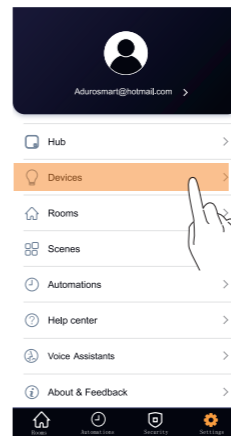
1B. If you have a **third party ZigBee compatible hub** then **proceed to step 8.**

2. Open the Adurosmart Eria APP.

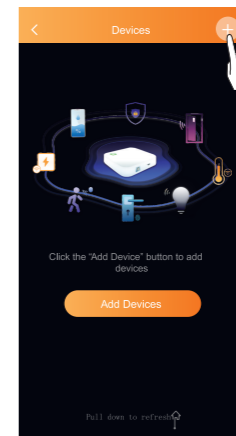
3. On the bottom right corner press on "Settings".



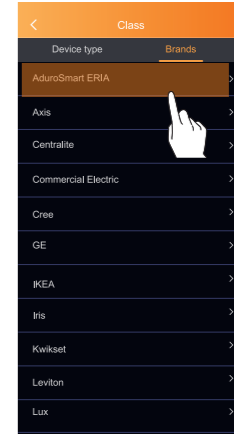
4. Select "Devices".



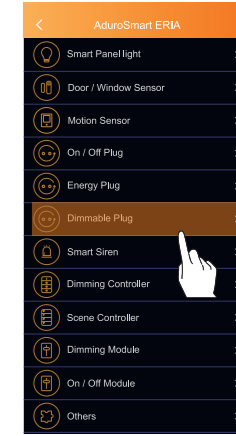
5. On the top right corner press on the "+" symbol then press on "Add device".



6. Press on "Brands" and then select "AduroSmart ERIA".

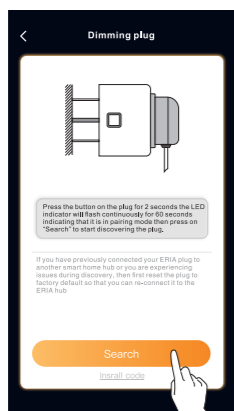
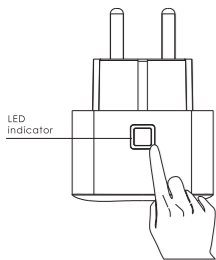


7. Press on "Dimming Plug".



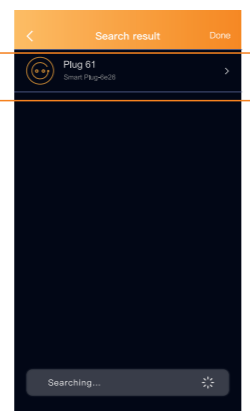
8. Press the button on the plug for 2 seconds the LED indicator will flash continuously for 60 seconds indicating that it is in pairing mode.

9. Proceed by pressing on "Search" to allow the Adurosmart ERIA hub to find the plug, the LED indicator on the plug will **flash green** this indicates that the hub is searching for new devices.



8B. If you have a **third party hub**, then this is the moment to **initiate the search from your Smart Home hub app.**

10. When the plug has been found and paired successfully the plug will stop flashing and it will show up in your search results, press on "Done" to complete the process.



### 11. Use with a wireless ZigBee switch. (no hub required)

Touchlink your smart plug with a ZigBee enabled touchlink remote: Move your touchlink remote within 10cm from the AduroSmart ERIA smart plug and initiate the touchlink procedure according to your touchlink enabled remote instructions.



### 12. Troubleshoot

When the smart plug does not enter pairing mode, then reset the plug to factory default by pressing the button on top of the smart plug for 10 seconds once the smart plug is set back to factory default it will blink shortly. The LED will blink fast 10 times to confirm the reset.



press 10 seconds

### 13. Improve Dimming

If the dimming effect is not satisfactory press the button for 25 seconds to switch from trailing edge to leading edge. When the switch has been made, the LED indicator will flash once to indicate the dimmer is set to leading edge or twice for trailing edge.



press 25 seconds

## NEED HELP? CALL US

For troubleshoots, instruction video's or more information please visit us at [www.adurosmart.com/faq](http://www.adurosmart.com/faq)

Chat with one of our support agents at [www.adurosmart.com](http://www.adurosmart.com)

The Netherlands: +31 523687532  
Support@Adurosmart.eu



[www.adurosmart.com/manuals/dimmingplug](http://www.adurosmart.com/manuals/dimmingplug)